

# How to Open Identical Trades On Many MT4 Accounts At Once

By Rimantas Petrauskas

[www.mt4copier.com](http://www.mt4copier.com)

## How to Enter the Same Trades On Multiple MetaTrader 4 Accounts at the Same Time

In this eBook you will learn how to trade one MetaTrader 4 account and have the same trades and pending orders appear in other accounts on the same computer immediately.

This allows you trade accounts of your friends, family or your customers by simply trading one MT4, usually your own account that you are trading every day.

# Contents

---

Preparing to trade multiple MetaTrader 4 accounts .....	3
Installing several MT4 terminals on the same computer .....	3
Login to all MT4 accounts .....	6
Basic MT4 configuration.....	8
Install special software for trading multiple accounts.....	9
Installing LTC Server EA .....	9
Installing LTC Client EA .....	13
Making LTC EA appear on MT4 platforms .....	15
Starting Local Trade Copier software .....	18
Running the LTC Server EA.....	21
Running LTC Client EA.....	24
MT4 Expert Advisor troubleshooting checklist .....	27
Opening your first position on all MT4 accounts at once .....	28
Conclusion.....	29

Did you know you can open the same positions on your friend's MetaTrader 4 account simultaneously even if it's located in another country?

When you open trades in your MT4 account you can have the same trades opened on other MT4 accounts at the same time. And the best part of it is that you can set this up in like 5 minutes.

In this eBook I will explain how it's done.

## **Preparing to trade multiple MetaTrader 4 accounts**

---

Here's what you'll need to do in order to open the same positions on two or more MT4 accounts at the same time.

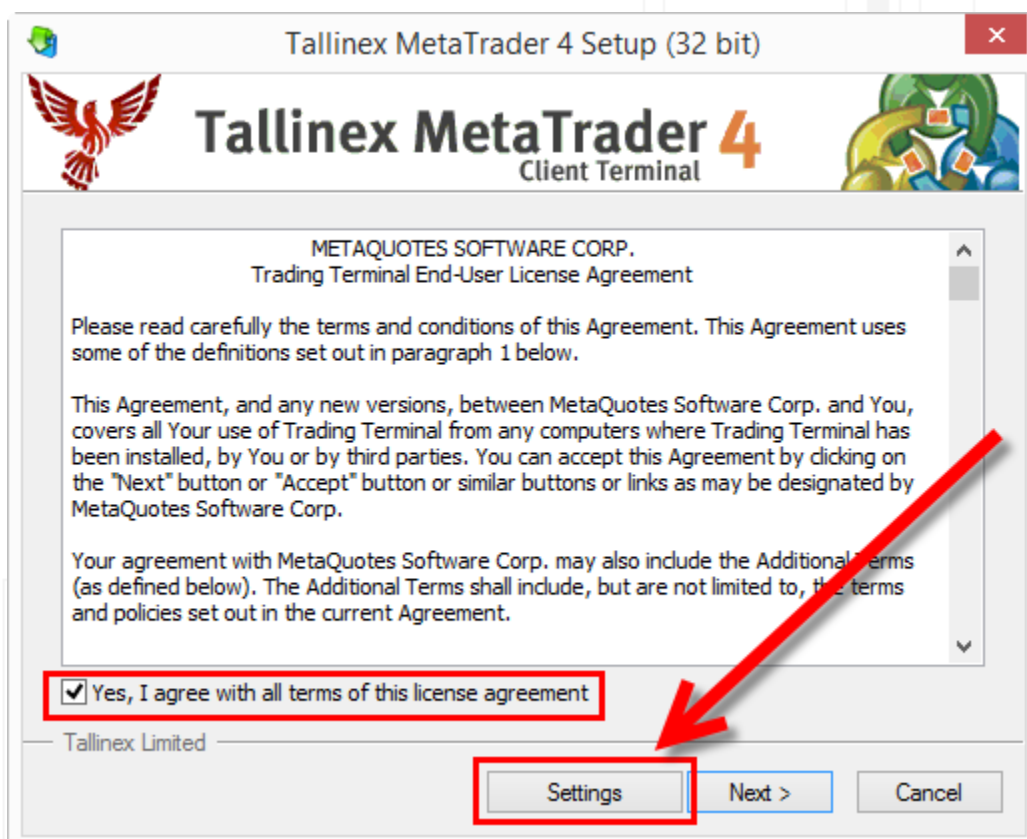
- Install multiple MT4 platforms on your computer
- Open all MT4 platforms and login into different accounts
- Install special software for trading multiple MT4 accounts
- Start that special software and set some basic settings
- Open your first position on the main MT4 account and have the same position transferred to all other MT4 accounts immediately

## **Installing several MT4 terminals on the same computer**

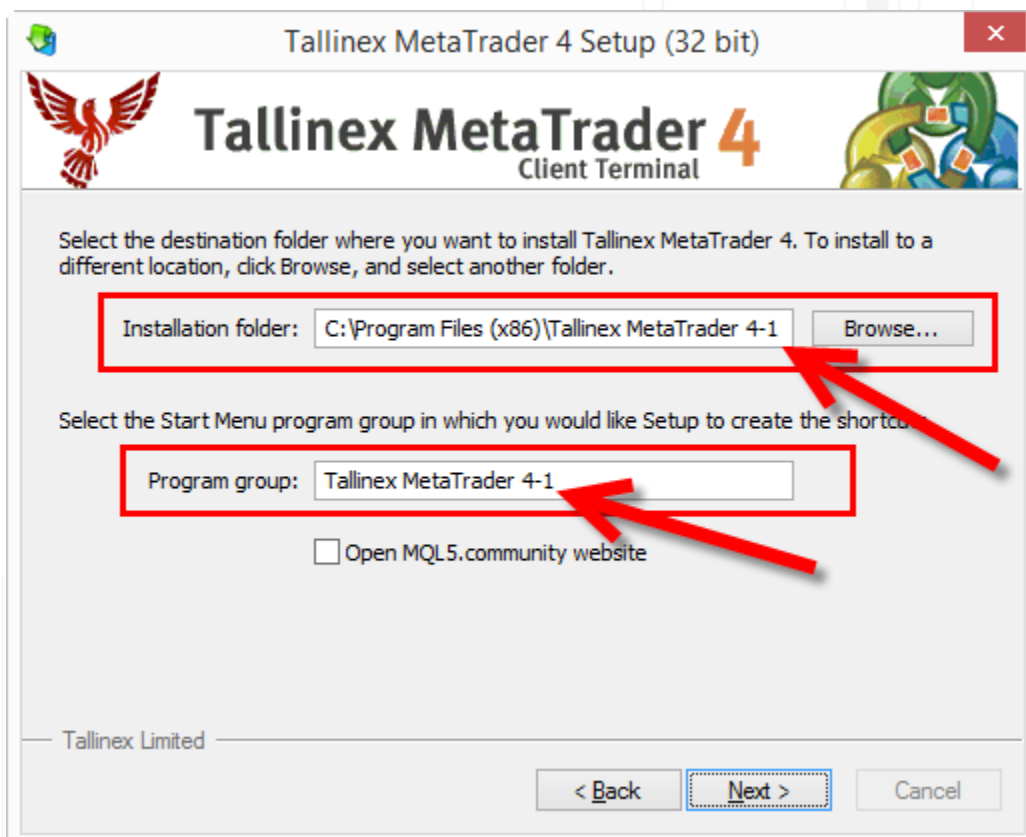
---

If you want to trade multiple MT4 accounts it is obvious that you need to have several MT4 platforms installed on your computer. This is quite easy and the process is the same as the regular MT4 installation. The only difference is that you'll need to set different installation destination folder for each of your MetaTrader platforms.

In the picture below (See pic. 1) you can see the SETTINGS button, which will take you to a page where you can choose different installation location.



(Pic. 1) Settings button will take you to a page where you can change the installation destination folder. Below is the image (See pic. 2) showing changed installation folder name.



(Pic. 2) This is where you can change the MT4 installation destination folder.

Personally I like to add numbers at the end of each folder. That way I end up having all MT4 platforms installed and numbered, so it's easy to access the right one when I need. (See pic. 3)

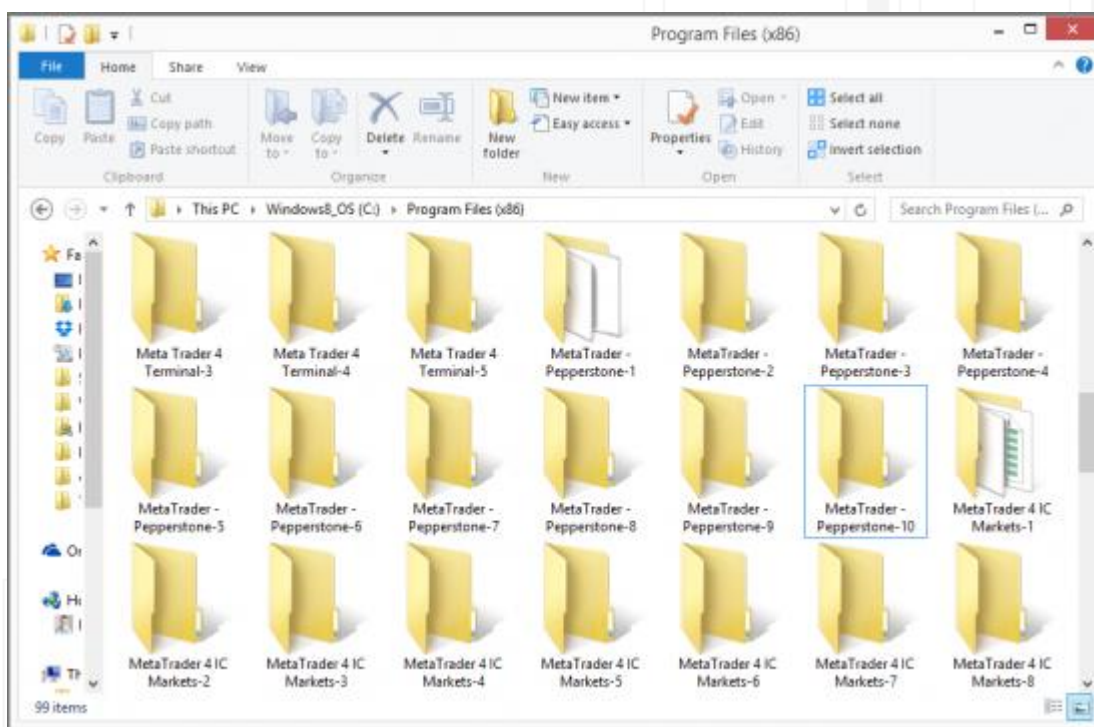
Example numbered folder named:

**C:\Program Files\MetaTrader 4-1\**

**C:\Program Files\MetaTrader 4-2\**

**C:\Program Files\MetaTrader 4-3\**

Notice the numbering at the end of the folder name? This will help you identify terminals and keep all installation files in different folders. You can give folders whatever name you want, just make sure that each name is unique.



*(Pic. 3) Multiple MT4 client terminals installed on the same computer/VPS*

Now you need to repeat the MT4 installation process twice, or five times, ten times, or whatever number of MT4 instances you need. Even if you're installing MT4 from the same Forex broker, you can still have multiple instances installed and running on the same computer.

## Login to all MT4 accounts

Next you need to open all MT4 accounts you want to trade at the same time and log in to each of them.

Now it's a good time to decide which MT4 account will be your main account. In other words, which account you choose to be the Master. This is the account that you will be trading and all positions that you open on this account will be transferred to other MetaTrader accounts automatically.

Now that you have decided which account is the Master, note that all other accounts will be Follower accounts.

So the Master account is the account you will be trading on, while Client (or Follower) account is the account receiving the same positions you open on the Master. (See pic. 4)

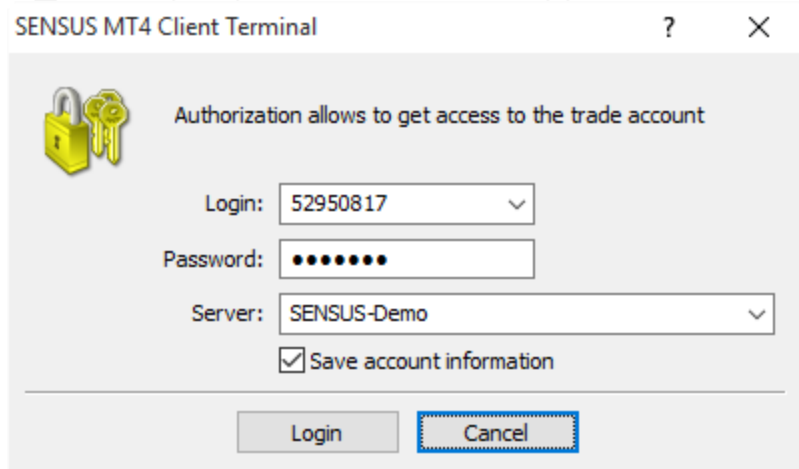


*(Pic. 4) Trading multiple MT4 accounts at once (Schema)*

Important to mention, that you can use Main or Investor (read-only) password to log in to the Master account. But it is mandatory to use the Main password when you are logging into all subsidiary (Client) accounts.

It is possible to have multiple Master accounts on the same computer too, but let's not rush things and first start with one Master and several Client accounts.

When you open MT4 account it will ask you to login or create a new account. If you already have an account you can close the registration window and enter your account login information. (See pic. 5)



*(Pic. 5) MT4 trading terminal login window*

Once you are logged into the MT4 account you can minimize the window and open the next MT4 platform.

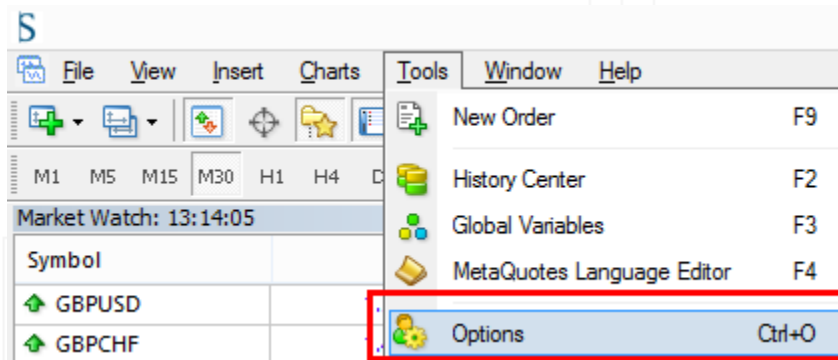
You repeat the same step for each MT4 you want to trade on your computer. This means you log in to different account on each MT4 platform.

## Basic MT4 configuration

All MT4 platforms by default are ready to be used for trading, but if you want to trade many accounts at once you need to enable one option.

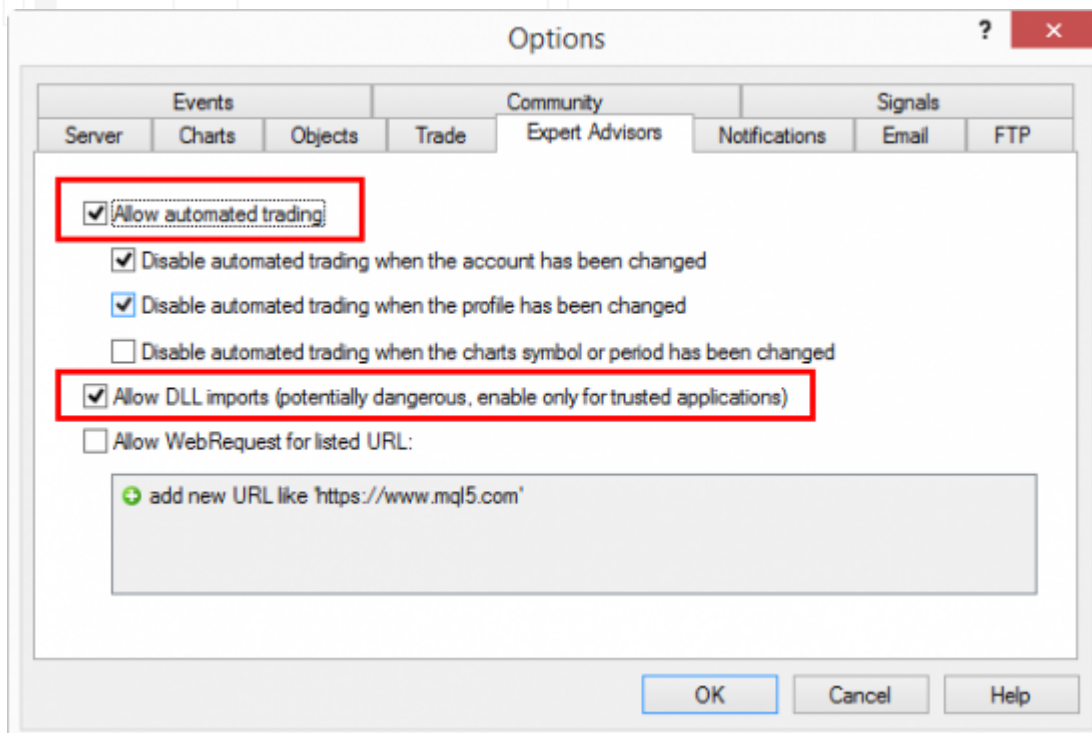
You will have to do this for each MT4 account you will be trading.

Open the **Tools -> Options** window from the top menu. (See pic. 6)



(Pic. 6) MT4 client terminal top menu: Tools -> Options

Then go to the **Expert Advisors** tab and enable "Allow automated trading" and "Allow DLL imports". (See pic. 7)



(Pic. 7) MT4 allows you to set the default setting for EA execution. This is the first window where I start MT4 configuration after fresh installation.



Repeat the same for each MetaTrader 4 platform you will be using.

## Install special software for trading multiple accounts

---

The software we need to use in order to transfer the same trades to other MT4 accounts is a special type of software which can duplicate trades between multiple MT4 accounts. Among Forex traders this type of computer program is usually called "trade copier" or "account copier". Others call it "trade duplicator" or simply "mirror software".

The main purpose for a trade copier application is to mirror your trading from the Master account and make sure all subsidiary Client accounts have the same open positions with the same parameters like stop loss and take profit. It's kind of linking several Client MT4 accounts to your Master MT4 account so that when you open positions on the Master, the same positions will be replicated on all Client accounts.

Such account mirroring software will repeat the same trading operations on all Client MT4 accounts. This means when you open, modify or close a trade on the Master account, the same will be done on Client accounts immediately.

We will be using **Local Trade Copier** from [www.mt4copier.com](http://www.mt4copier.com)

Let's begin the installation.

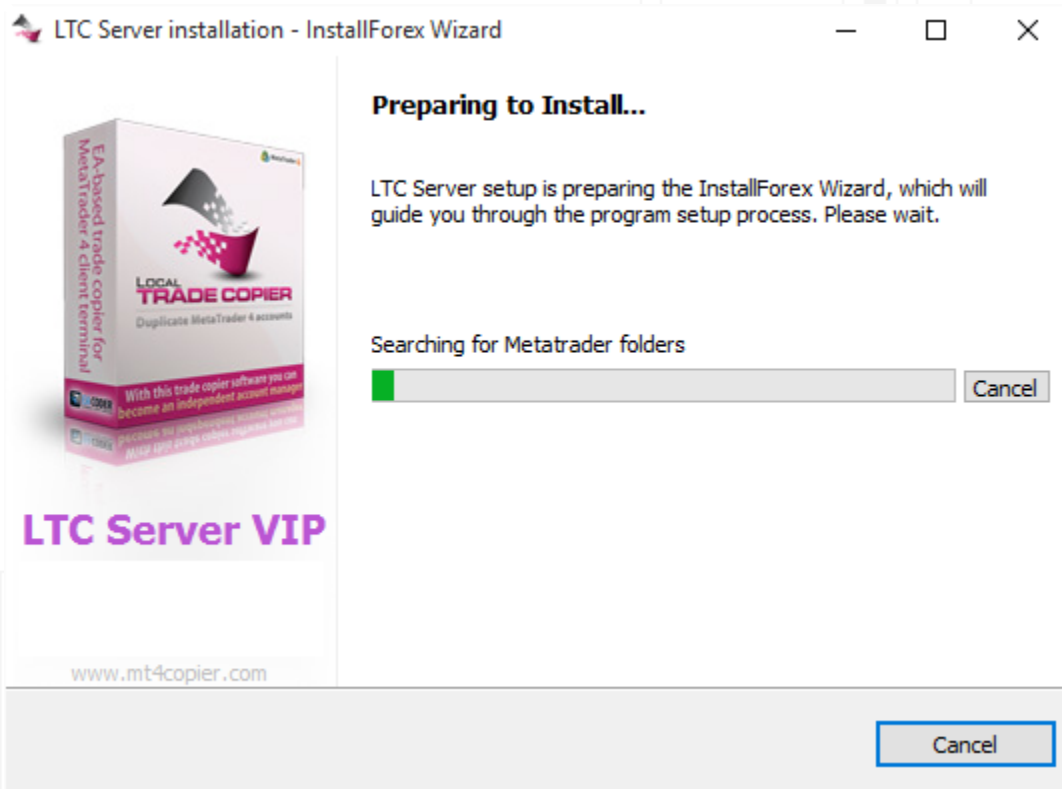
There are two stages of LTC installation.

1. Install LTC Server EA on the Master MT4 account
2. Install LTC Client EA on all Client MT4 accounts

Installation process is relatively the same for Server EA and Client EA, the only difference is which MT4 platform you will select during the installation.

### Installing LTC Server EA

When I start the LTC Server EA auto-installer it will scan my computer to find all MetaTrader 4 instances. (See pic. 8)



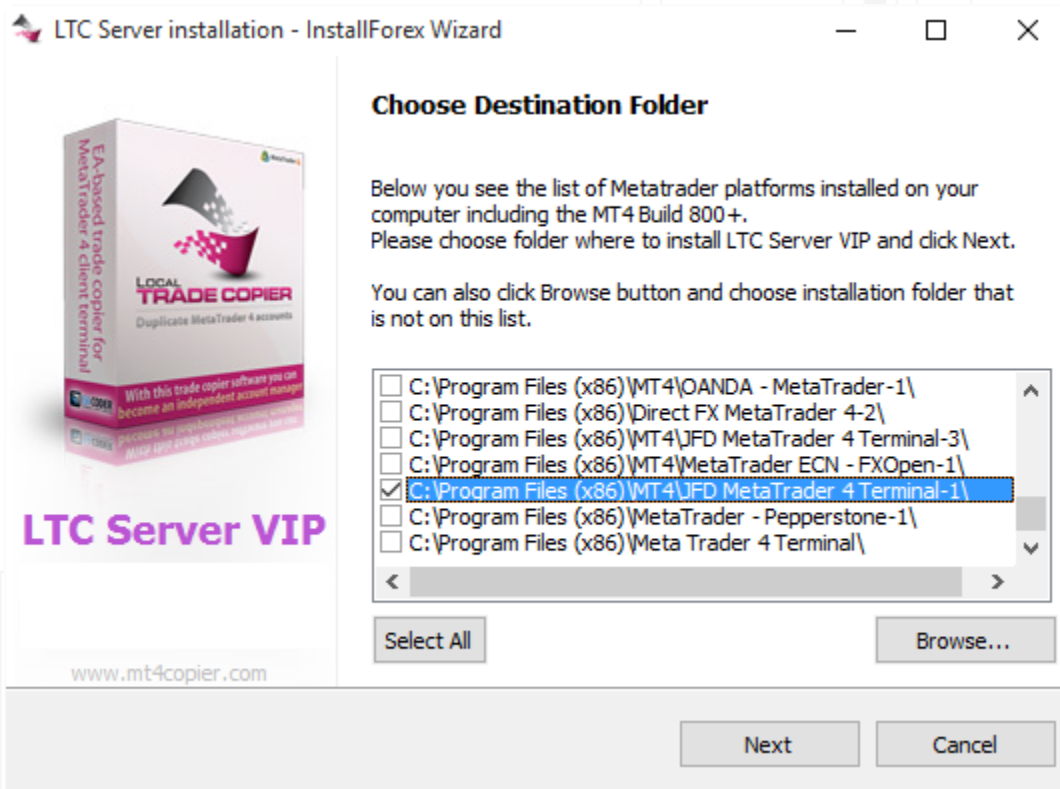
*(Pic. 8) LTC Server EA auto-installer scanning to find all MT4 platforms*

When scan is finished the auto-installer is ready to begin installation as soon as the user clicks NEXT button. (See pic. 9)



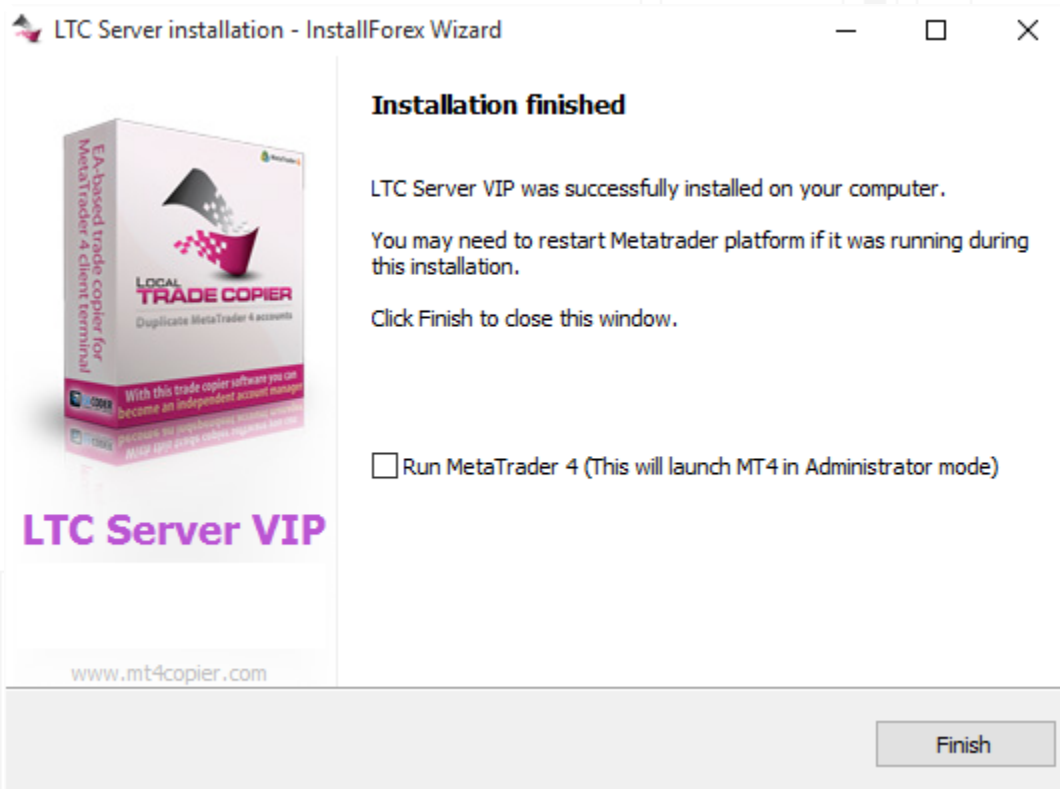
*(Pic. 9) LTC Server auto-installer is ready to begin installation*

In the next step auto-installer shows the list of all MT4 platforms found on the computer. (See pic. 10) In this window you need to choose where to install the LTC Server EA. You can choose multiple destinations, but in this tutorial we will be using one Master account so let's select just one MT4 from the list.



(Pic. 10) LTC Server EA auto-installer is waiting while user selects installation destination

After you click NEXT the Server EA files will be installed and then you can choose whether you want this particular MT4 platform to be loaded or not. I will un-select this option, because my Master MT4 is already running. (See pic. 11) Note, that by selecting this option MT4 would be loaded with Administrator privileges.



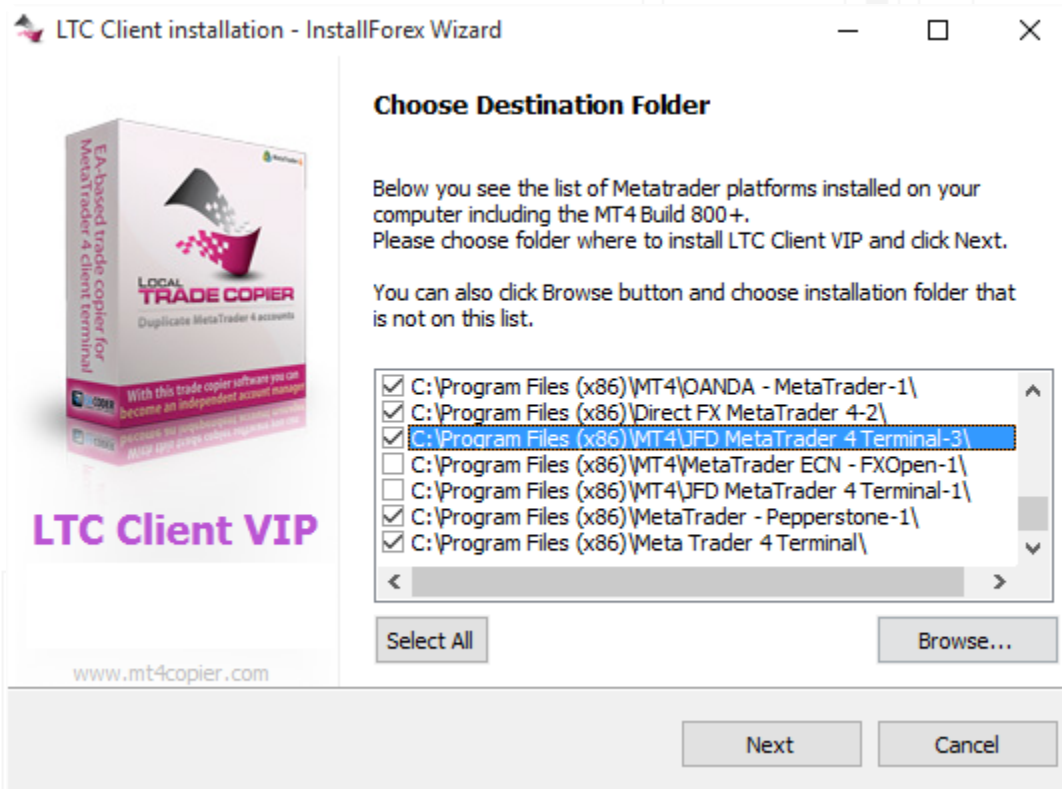
*(Pic. 11) LTC Server EA installation is finished now*

If you ever need to re-install the Server EA or install it in to additional MT4 platforms, just run the auto-installer again and follow on screen instructions.

## Installing LTC Client EA

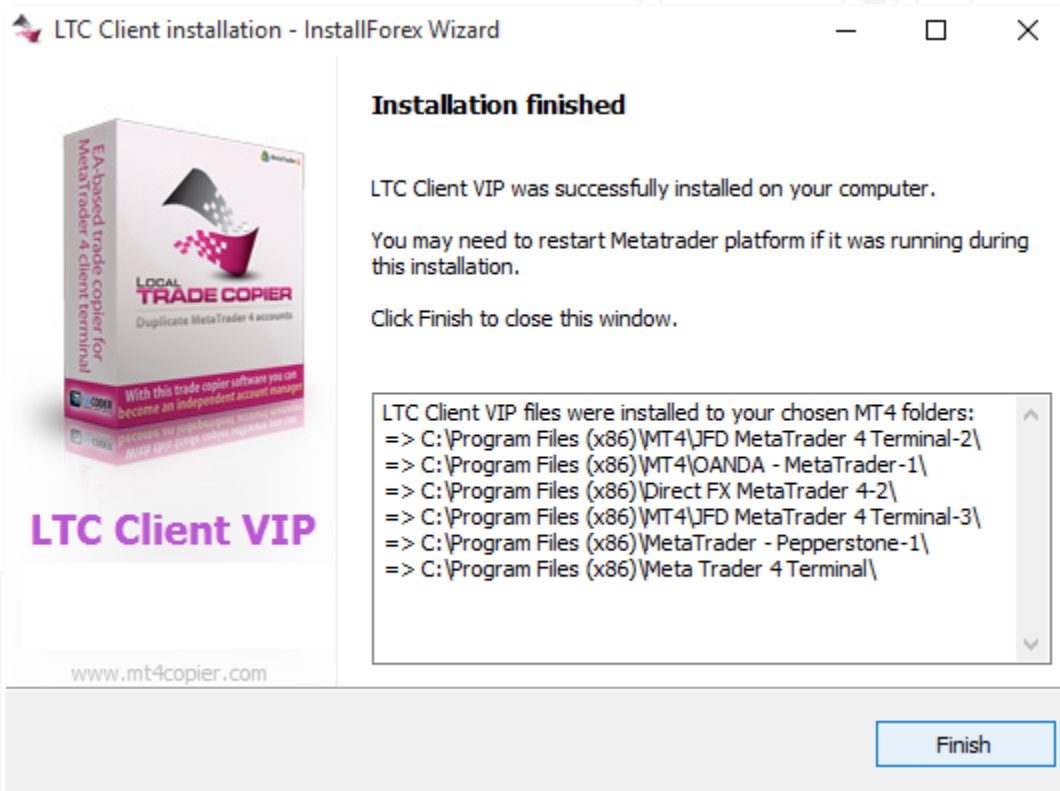
Installation of the LTC Client EA is relatively the same, except that you need to choose different MT4 platforms from the list. You need to select those platforms which will act as Client MT4 accounts and receive trading positions from your Master MT4.

Here's how I select multiple Client MT4 platforms from the list. (See pic. 12)



(Pic. 12) LTC Client EA auto-installer is waiting while user selects installation destination

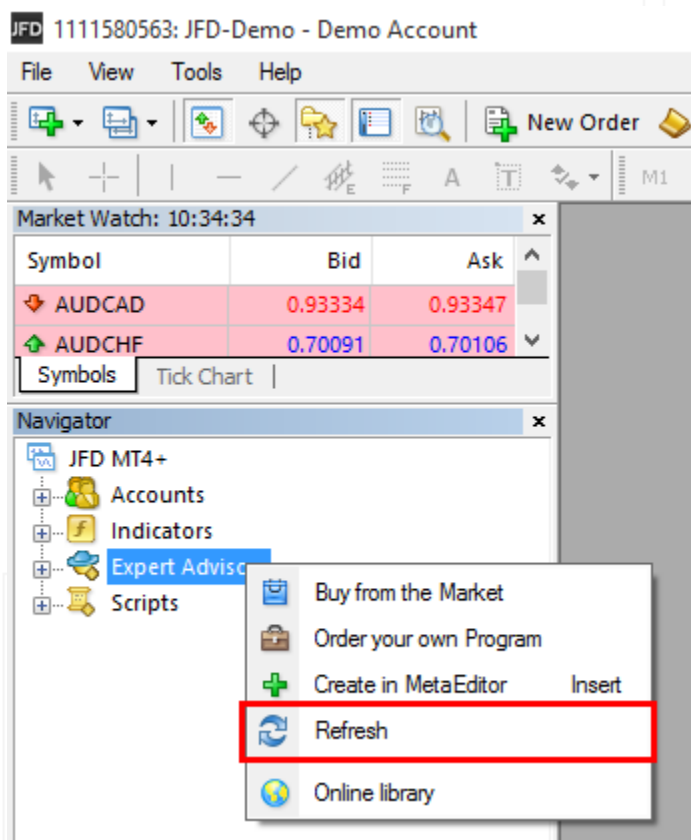
Once you click NEXT, the LTC Client EA is installed into all MT4 platforms selected. On the last step of installation process you get to see the list of platforms where Client EA was installed. (See pic. 13)



(Pic. 13) LTC Client EA installation is finished now

## Making LTC EA appear on MT4 platforms

If installation of any Expert Advisor (including LTC Server EA and LTC Client EA) is done while MT4 is running, you will not see them appear in the Navigator window. You need to restart MT4 platform or refresh the list (See pic. 14) of Expert Advisors. I prefer the 2nd option, because it's faster and I do not need to restart MT4.

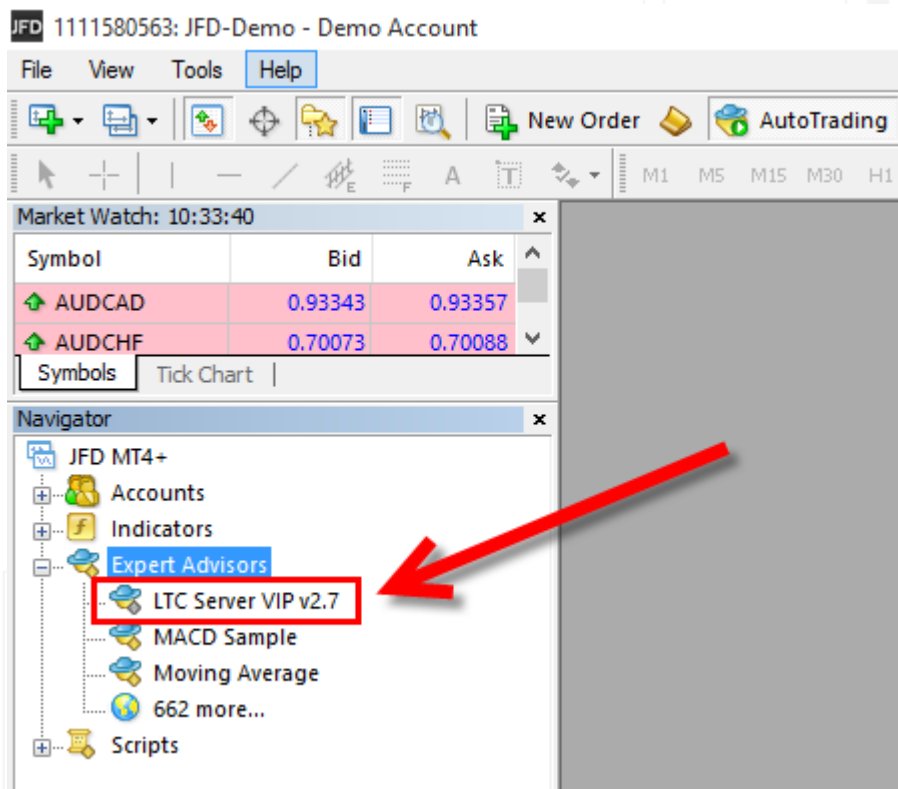


(Pic. 14) Refreshing the Expert Advisor list in MT4 Navigator window

Repeat the "Refresh" command on all MT4 instances you will be using.

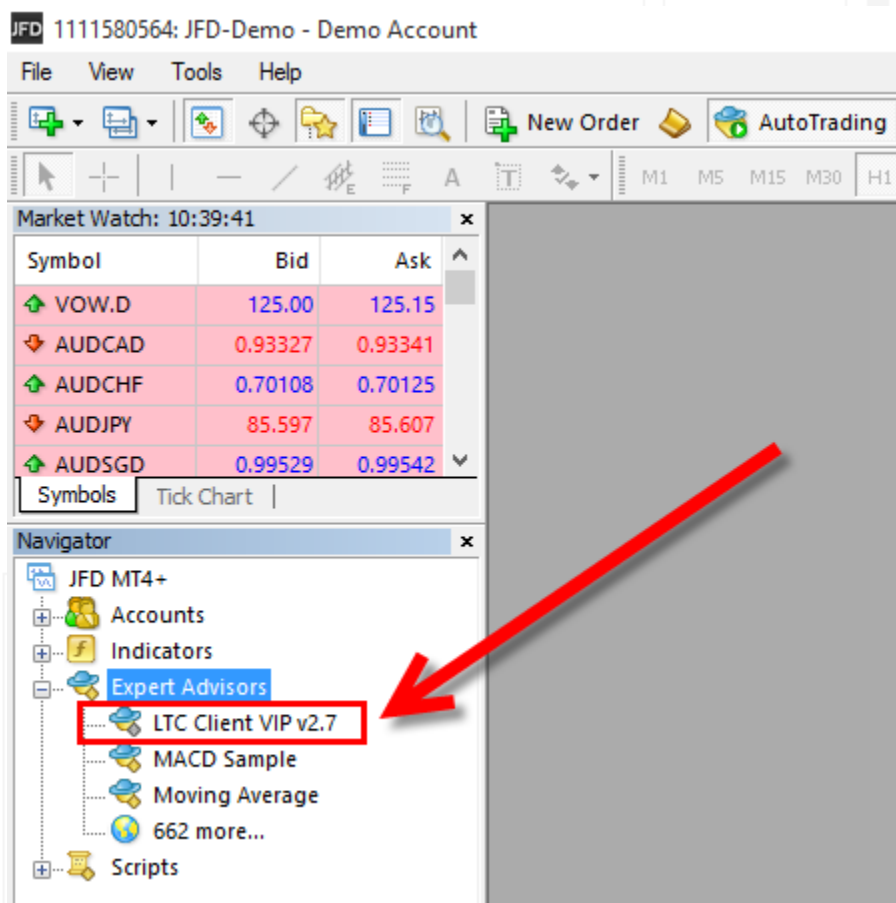
When I refresh the EA list and expand it, I see my LTC Server EA or LTC Client EA, depending to which MT4 platform I am looking at. (See pic. 15)





(Pic. 15) LTC Server EA in MT4 Navigator window

And this is my LTC Client EA on one of the Client MT4 accounts I will be using. (See pic. 16)



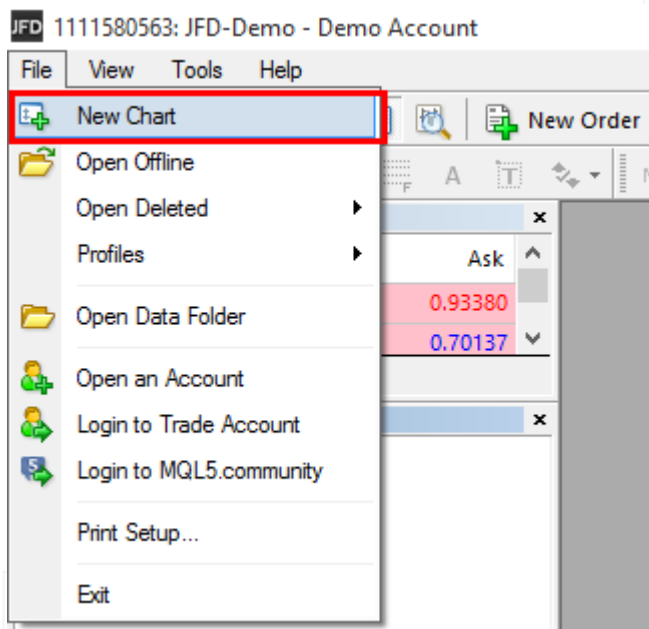
(Pic. 16) LTC Client EA in MT4 Navigator window

Now that the LTC installation is finished we can start using it.

## Starting Local Trade Copier software

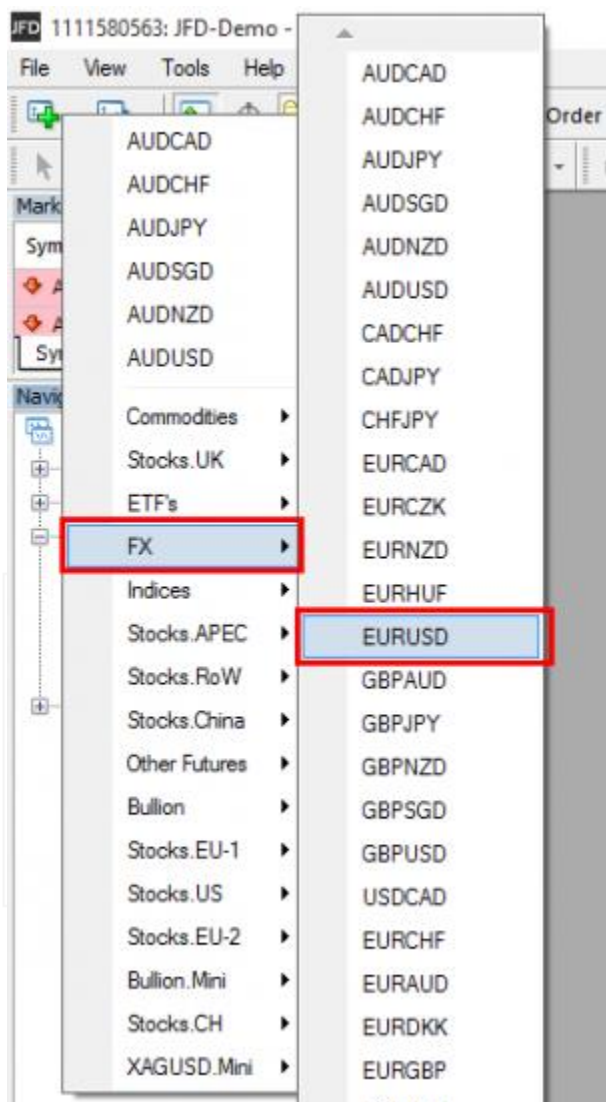
To start the Server EA or Client EA you will have to open a chart first (See pic. 17). It can be chart of any symbol and any time frame, but I recommend EURUSD.

So let's open the EURUSD chart on each MT4 platform. From the top menu select **File -> New Chart**.



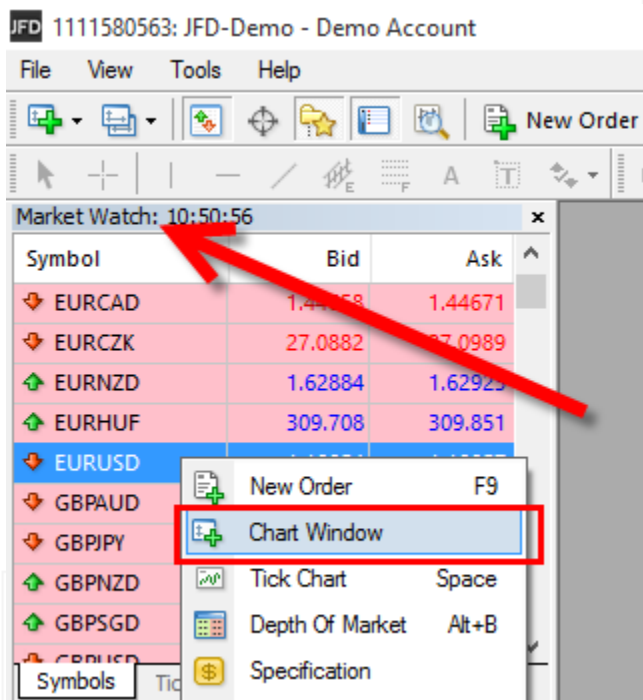
*(Pic. 17) Opening New chart window from the top MT4 menu*

You will see the list of symbols appear (See pic. 18). Find and choose the EURUSD symbol. In the picture below you see this particular MT4 offers quite a big list of symbols and EURUSD appears under FX category. Other MT4's might have it right at the top or listed under some other category.



(Pic. 18) Opening New EURUSD chart window from the top MT4 menu

Alternative way to open the EURUSD chart is to find it in the Market Watch window (See pic. 19), right-clicking on it and choosing "Chart Window".



(Pic. 19) Opening New EURUSD chart window from the Market Watch window in MT4

Repeat this step for each MT4 platform you will be using.

So we have EURUSD chart open now on all MT4 platforms.

Next you need to attach LTC EA on that EURUSD chart.

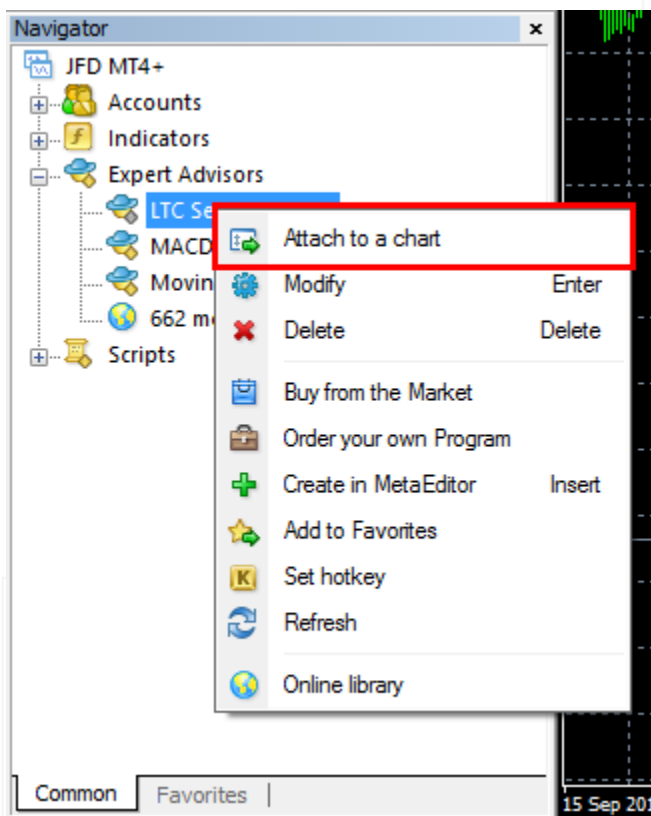
I will remind that the LTC Server EA must be used on the Master MT4 account while LTC Client EA must be used on the Client MT4 account.

## Running the LTC Server EA

There are three ways to start an Expert Advisor in MT4 platform.

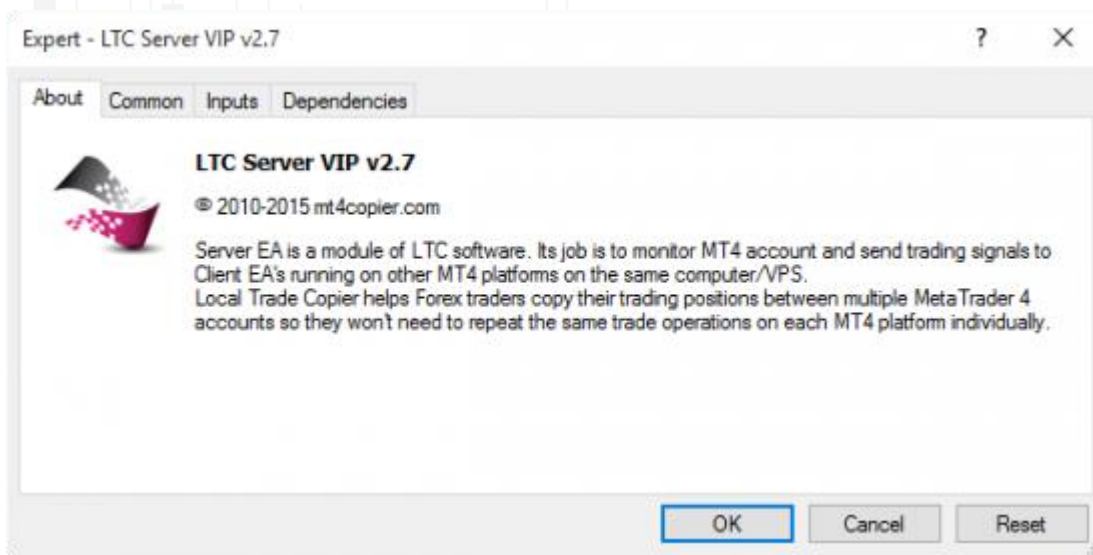
1. "Attach to a chart" method (See pic. 20). Right click on the EA and select "Attach to a chart". EA will be attached to the currently active chart window.
2. Double-click method. Double-click on the EA in Navigator window. EA will be attached to the currently active chart window.
3. Drag'n'Drop method. Click and drag the EA from Navigator window to the chart you want to attach it to.

Here's where the "Attach to a chart" is located.



(Pic. 20) Attach Expert Advisor to a chart in MT4

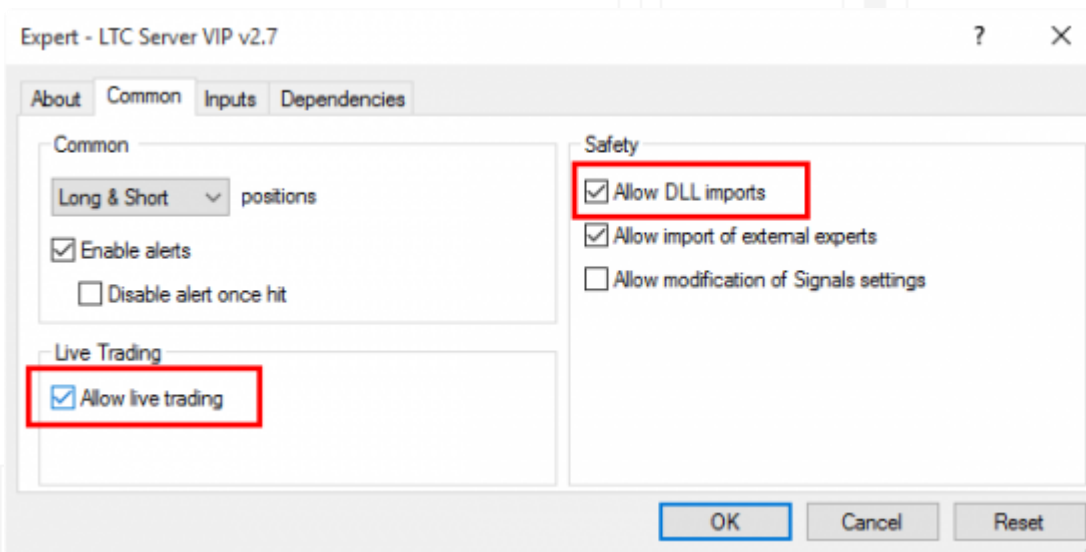
When LTC Server EA is attached to a chart, immediately you will see the "EA Properties" window that looks like this. (See pic. 21)



(Pic. 21) About LTC Server EA

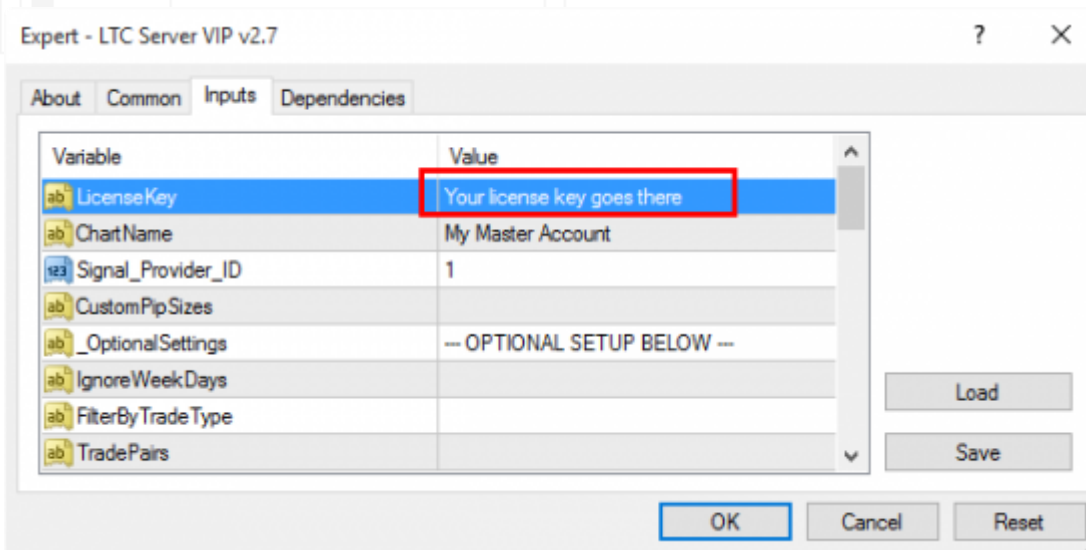
To ensure that the EA runs properly switch to the "Common" tab (See pic. 22) and double-check if the following options are selected:

- Allow live trading
- Allow DLL imports



(Pic. 22) For EA to function properly the following options should be selected

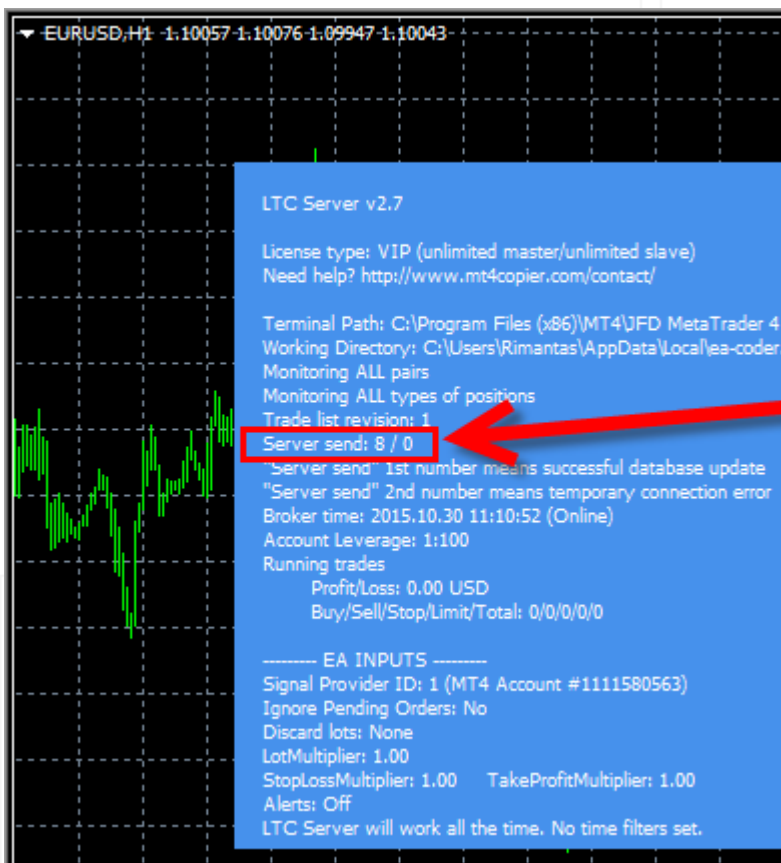
Next, switch to the "Inputs" tab (See pic. 23) where you will have to enter the license key of the software (yes, it's a commercial software) and be able to set any other settings.



(Pic. 23) Enter license key for LTC Server EA here

There are a lot of settings available in LTC, and usually you won't need them all. So do not freak out. The only thing you need to enter is license key.

When you click OK the EA will start working and that's how it should look like on the chart (See pic. 24). The first "server send" counter should be growing continuously which indicates that EA is working.



(Pic. 24) When the first number of server send counter is growing it means Server EA is running

Okay, you have the Server EA running. Let's run the Client EA.

## Running LTC Client EA

To run the LTC Client EA you will have to repeat the same steps as for the Server EA, except that the Client EA has different settings.

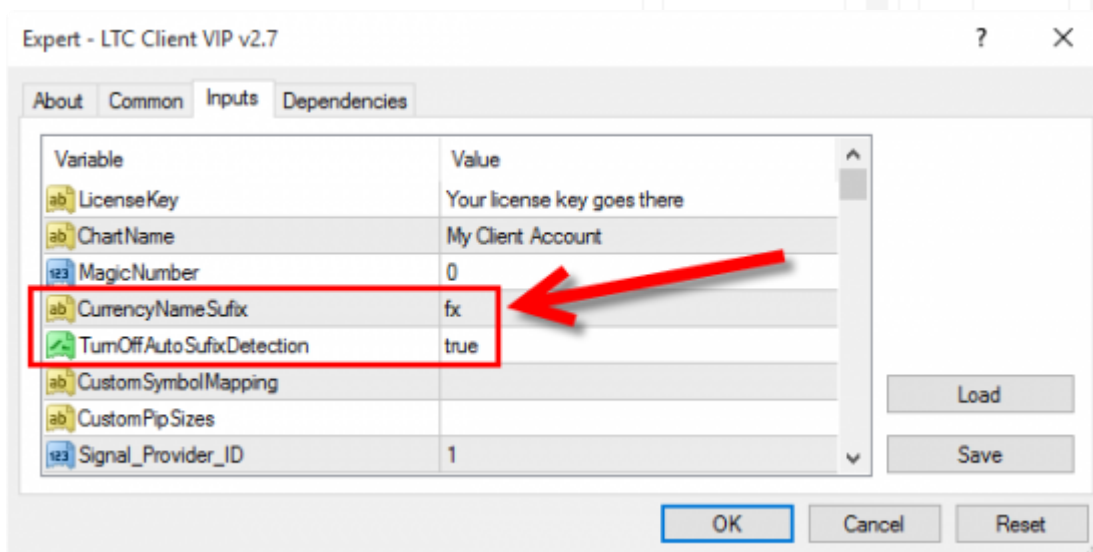
There are much more settings in the Client EA than in the Server EA, but again, you do not need them all, for now.

Enter the license key for Client EA the same way you did for Server EA.

In most cases Client EA will work with its default settings, but in some cases you might need to set the currency suffix (See pic. 25) if your broker use any. For example if your broker has EURUSDfx symbol instead of the regular EURUSD, you might need to set the following in your Client EA **if it does not detect this automatically**.

- Set CurrencyNameSuffix to **fx**
- Set TurnOffAutoSuffixDetection to **TRUE**





(Pic. 25) Setting up symbol suffix manually in LTC Client EA

But in most cases Client EA will detect this automatically and you won't need to go through this suffix setup.

If it happens so that you do not want Client EA to use symbol suffix (in case your broker has two symbols, with and without suffix), you might need to set the following:

- Leave CurrencyNameSufix empty
- Set TurnOffAutoSufixDetection to **TRUE**

When Client EA starts working that's how it should look like on the chart (See pic. 26). The first "server read" counter should be growing continuously which indicates that EA is working.



(Pic. 26) When the first number of server read counter is growing it means Client EA is running

Okay, you have the Client EA running. Now repeat the same on each Client MT4 account you have.

Note that all Client MT4 accounts must have the Client EA attached and running in order to mirror the same positions you open on the Master account.

If you run into any problem, use the following checklist to solve any issues with the Expert Advisor. In many cases it is very easy to find the cause of the problem and fix it yourself if you just take a look at the MetaTrader 4 log files.

## MT4 Expert Advisor troubleshooting checklist

---

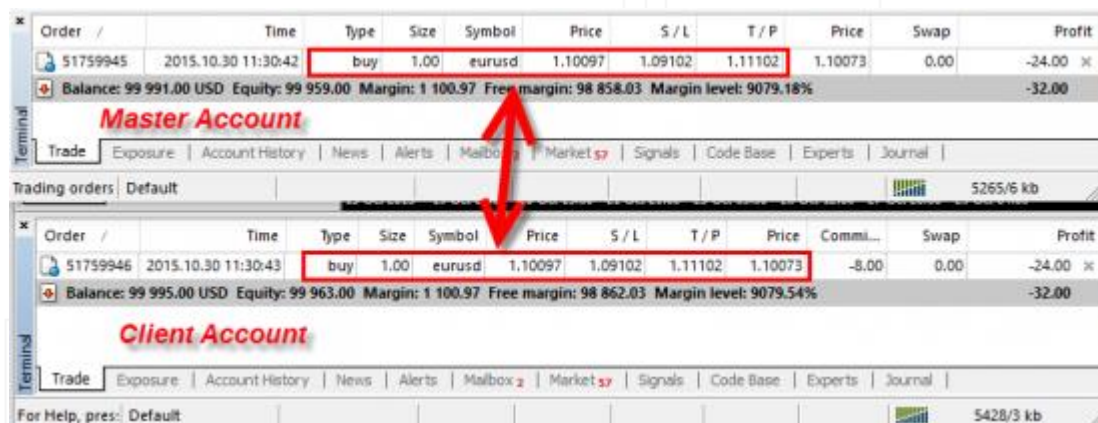
The list of things that are most likely to fix Expert Advisors problems on MT4 client terminal:

1. "Autotrading" option should be turned on in the top toolbar of the MT4 terminal window.
2. "Allow live trading" option should be selected in the "EA Properties" window. Look for smiley face in the right-top corner of the chart.
3. "Long & Short" positions should be enabled for normal Expert Advisor operation.
4. For some EA's the "Allow DLL imports" option should be selected in the "EA Properties" window.
5. For some EA's the "Allow import of external experts" option should be selected in the "EA Properties" window.
6. Check configuration in the "Tools -> Options -> Expert Advisors" window.
7. Check the "Experts" tab for error messages at the bottom of the MT4 terminal window.
8. Check the "Journal" tab for error messages at the bottom of the MT4 terminal window.
9. Check if MT4 terminal is connected to the broker server.
10. Check if your Internet connection has no problems.
11. Make sure MT4 app can authorize license key (if applicable).
12. Restart MT4 client terminal.
13. Check if your computer has multi-core CPU.
14. Read instruction manual and double check everything.
15. Contact technical support.

If you want more details on each of those checklist items you can read this comprehensive blog post I wrote "[Troubleshooting Expert Advisors on MetaTrader 4](#)".

## Opening your first position on all MT4 accounts at once

Open the trade on Master MT4 account now and the same trade should be replicated to each of your MT4 accounts. In the picture below (see pic. 27) you see the trade was copied to the Client MT4 account with the same trade parameters.



The screenshot displays two MT4 Terminal windows. The top window is for the 'Master Account' and the bottom window is for the 'Client Account'. Both windows show an open trade with identical parameters. A red double-headed arrow points from the trade in the Master Account to the trade in the Client Account, illustrating the replication process.

Order /	Time	Type	Size	Symbol	Price	S / L	T / P	Price	Swap	Profit
51759945	2015.10.30 11:30:42	buy	1.00	eurusd	1.10097	1.09102	1.11102	1.10073	0.00	-24.00

Balance: 99 991.00 USD Equity: 99 959.00 Margin: 1 100.97 Free margin: 98 858.03 Margin level: 9079.18%

**Master Account**

Trade Exposure | Account History | News | Alerts | Mailbox | Market | Signals | Code Base | Experts | Journal

Trading orders: Default

5265/6 kb

Order /	Time	Type	Size	Symbol	Price	S / L	T / P	Price	Comm...	Swap	Profit
51759946	2015.10.30 11:30:43	buy	1.00	eurusd	1.10097	1.09102	1.11102	1.10073	-8.00	0.00	-24.00

Balance: 99 995.00 USD Equity: 99 963.00 Margin: 1 100.97 Free margin: 98 862.03 Margin level: 9079.54%

**Client Account**

Trade Exposure | Account History | News | Alerts | Mailbox | Market | Signals | Code Base | Experts | Journal

For Help, press: Default

5428/3 kb

(Pic. 27) Local Trade Copier duplicated forex position to a client MT4 account

Once the trade on the Master account is closed manually, automatically, or by hitting SL/TP, the Client EA will close it immediately on all Follower accounts as well. Any stop loss or take profit changes are mirrored as well, so this makes all Client accounts to have exactly the same trades as on the Master account.

## Conclusion

---

By implementing this technique you can trade multiple MetaTrader 4 accounts at once from just one MT4 account. This is the easiest and fastest way to transfer your trading positions to your friends, family members or your clients. This is the type of software that can make you an independent account manager, if you will.

Usually account managers need to go through a lot of paper work and sign many documents before they can have a so called PAMM account with the Forex broker, which allows to trade many MT4 accounts at the same time. Not everyone is eligible to have a PAMM account and usually you will need a minimum fund of thousands of dollars to get such account.

Now that you know how it's done you can even do this on a VPS server which would allow your MT4 platforms to run all the time 24/7 uninterrupted.

[Click here to get your trial version of the \*\*Local Trade Copier\*\* and try it yourself](#)

Regards,

*Rimantas Petrauskas*

Programmer with 16 years of experience  
Creator of the Local Trade Copier



Rimantas Petrauskas